



TOP END DISCOVERY: DARWIN EXPERIENCE



MONDAY 20 JULY - SUNDAY 26 JULY 2026

 7 Days

 NT, Darwin



\$8480 per person - Twin/Double share
\$8775 Sole Occupancy

Darwin & the Top End: Sunsets, Crocs and Cultural Adventures!

Fly from Canberra to Darwin and immerse yourself in the best of the Top End! Enjoy a Spirit of Darwin sunset cruise, explore Darwin's WWII history and heritage precincts, and discover the rich culture of the Tiwi Islands. Experience the thrill of jumping crocodiles, browse the vibrant Mindil Beach Sunset Markets, and enjoy the excitement of the Darwin Show. A full day at Litchfield National Park showcases stunning waterfalls, magnetic termite mounds, and breathtaking scenery. This unforgettable journey combines wildlife, culture, history, and tropical sunsets for a true Top End adventure.

DEPARTURE LOCATION

Meet at Canberra Airport

Time will be confirmed 3 weeks before departure

INCLUSIONS

- Luxury Coach Transportation with local Darwin operator
- Flights from Canberra to Darwin Return
- 6 Nights Quality Darwin Accommodation
- 6 Hotel Breakfasts
- 4 Hotel dinners
- Spirit of Darwin Sunset Dinner Cruise
- Lunch at Humpty Doo Hotel
- Lunch at Litchfield Cafe
- Visit and Morning Tea at Audit House NT National Trust
- Visit and Lunch at Burnett House NT National Trust
- Sightseeing at Myilly Point Heritage Precinct
- Visit and tour of WWII Oil Storage Tunnels
- Ferry and Tiwi Islands Cultural Experience with Lunch
- Adelaide River Jumping Croc Cruise
- Transfers to Mindil Sunset Beach Markets
- Transfers and entry to Darwin Show
- Park Fees and Sightseeing in Litchfield National Park
- Visit to Darwin Museum and Art Gallery



CANBERRA TO DARWIN ✈️🌴

Day 1 - Monday 20 July 2026 (IFM-D)

Fly from Canberra and arrive in **tropical Darwin**, where warm, sunny days and low humidity set the scene for your **Top End adventure**. After checking in at our Hotel on the Darwin Esplanade enjoy some time to unwind before we head out to the Spirit of **Darwin Sunset Dinner Cruise**, enjoying stunning harbour views as you relax and settle in for the journey ahead.

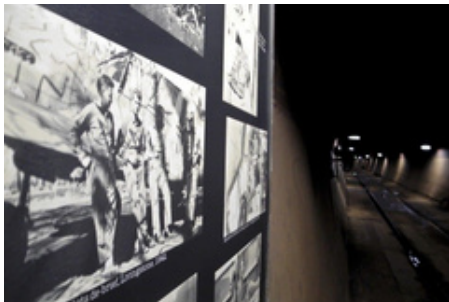
DoubleTree by Hilton Hotel, Esplanade Darwin - 6 Nights



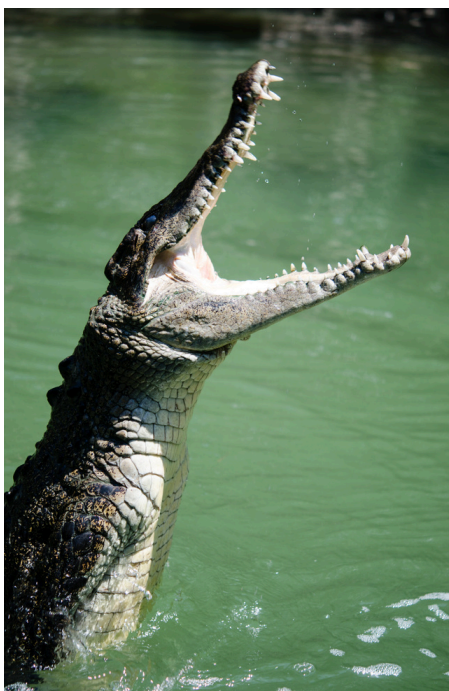
DARWIN HIGHLIGHTS & WWII HERITAGE 🌸🎖️

Day 2- Tuesday 21 July 2026 (BLD)

Step back in time and explore Darwin's fascinating heritage and wartime history. Begin at the **Myilly Point Heritage Precinct**, where charming 1930s government homes offer a glimpse into the city's early residential life. Next, visit the **Audit House**, Darwin's elegant former administrative residence, and the distinctive **Burnett House**, a unique two-storey timber home showcasing tropical architecture of the era. Enjoy morning tea and a light lunch as you soak up the historic surroundings.



Then, uncover the secrets of the **Darwin Oil Storage Tunnels**, a remarkable WWII engineering feat that protected the city's fuel supplies during the Japanese bombing raids. The afternoon features further exploration of Darwin's historic sites and key city highlights.



JUMPING CROC AND HUMPTY DOO 🐊🛍️🌞

Day 3 - Wednesday 22 July 2026 (BL)

Today we travel into the stunning landscapes of **Kakadu National Park**, a World Heritage-listed region known for its dramatic scenery and unique wildlife. Our day begins with a thrilling **Jumping Crocodile Cruise** on the **Adelaide River**, where you'll safely witness saltwater crocodiles launch themselves from the water just metres from the boat. Along the way, expert guides share fascinating insights into these powerful creatures and the surrounding wetland ecosystem.

We then continue to the iconic **Humpty Doo Hotel** for a relaxed lunch stop, giving you time to unwind and enjoy a true Northern Territory experience in a laid-back outback setting. The remainder of the afternoon is yours to explore the Darwin Waterfront and enjoy dinner at the Hotel.



TIWI ISLANDS AND MINDL MARKETS 🏖️🍴🥗
Day 4 - Thursday 23 July 2026 (BLD)

Embark on an early ferry to Bathurst Island for a full day of cultural immersion. Explore the Wurrumiyanga Aboriginal Community and Tiwi Design Art Centre, experience a traditional Welcome to Country with local artists and dancers, and enjoy morning tea.

Discover the island's **historic mission precinct**, hear the **Tiwi Creation story**, and learn about the island's rich **culture, WWII history, and football legacy**. Take time out for **lunch in a scenic location** and sit with the Tiwi ladies while they paint. Browse local carvings, paintings, and textiles before returning to Darwin in the late afternoon.



This evening we travel to the famous **Mindil Beach Sunset Markets**. Stroll at your own pace through over 200 stalls of food, art, and local crafts, soaking in the lively atmosphere and finishing with the breathtaking Timor Sea sunset, a perfect end to the day.



74TH ROYAL DARWIN SHOW 🎪📈🍔
Day 5 - Friday 24 July 2026 (BD)

Enjoy a taste of local life with a morning visit to the vibrant **Darwin Show**, the Northern Territory's largest annual community event. Wander through colourful exhibits, agricultural displays, entertainment and community showcases, with lunch at leisure at the showgrounds. Sample a wide variety of food stalls and classic show favourites.

This afternoon, explore the **Museum and Art Gallery of the Northern Territory**, home to compelling exhibits including the powerful **Cyclone Tracy display** and stories that bring the Territory's rich history to life. Continue with a relaxing guided stroll through the tropical surrounds of the **George Brown Darwin Botanic Gardens**, showcasing lush flora and tranquil pathways in a beautiful natural setting. Afterwards we return to the hotel to refresh before dinner.





LITCHFEILD NATIONAL PARK 🌳🏞️

Day 6 - Saturday 25 July 2026 (BLD)

Enjoy a full day in the stunning **Litchfield National Park**, designed for a relaxed and memorable experience. Travel through the park on a scenic drive, admire the famous Magnetic Termite Mounds, and take in the breathtaking views at **Florence Falls lookout**. There's the option to dip your feet or swim at **Wangi Falls** in a safe, tranquil setting. Pause for a leisurely lunch at **Litchfield Café** and enjoy plenty of time to take photos, soak up the scenery, and appreciate the natural beauty of the Top End. A perfect day of sightseeing at a comfortable pace.



HOMEWARD BOUND ✈️🏠

Day 7 - Sunday 26 July 2026 (B-IFM)

After a leisurely final breakfast, check out of your hotel and enjoy some sightseeing from the coach before we transfer to **Darwin Airport** for your journey home.

Reflect on the incredible experiences, stunning scenery, and warm Top End hospitality you've enjoyed, taking home lasting memories of a truly unforgettable adventure.

BOOKING TERMS & CONDITIONS

It is important that you read these conditions carefully to ensure that You understand Your rights and obligations. Payment of deposit or other charges constitutes acceptance of these terms. This applies equally to all persons included in the reservation.

Payments: A non-refundable, non-transferable deposit is required within 7 days of receiving written confirmation of your booking. Potter Travel may cancel the booking if this deposit is not received within that time. The deposit for this tour is **\$850 per person**. The final payment is due by **Monday, 21 April 2026**.

Online Direct Debit transactions must include your Booking Reference noted on your Booking Confirmation. There is a 1.99% service fee on all credit/debit card transactions. This covers the cost of using Stripe's reliable payment processing services. The charges will apply to payments made by credit or debit card, whether partial or full. *Subject to change, in accordance with Stripe Gateway payment conditions.

Cancellation: You may cancel your booking by giving written notice to Potter Travel or calling our reservation team. Cancellation fees and charges will be levied as follows, irrespective of when notice of cancellation is received:

- Any amounts we have paid or have contractually committed to pay to third parties to deliver your travel arrangements that we cannot reasonably recover (for example payments made or due to hotels, airlines, cruise companies, tour wholesalers).
- Where we operate any of the services included in your travel arrangements (for example, coach travel), a reasonable amount attributable to such services which we determine we cannot resell.
- A fee which is the greater of the deposit and 20% of the booking value to compensate us for work performed up until the time of cancellation.
- A fee not greater than 5% of the booking value to compensate us for processing the cancellation and any associated refund.
- Cancellations received within 90 days before departure will incur a 100% cancellation fee.

We recommend that you obtain an appropriate level of travel insurance at the time you pay your deposit to cover any applicable non-refundable or cancellation fees.

Itinerary: Potter Travel reserves the right to alter itineraries without notice due to weather, road conditions or any other reason that is seen to be in the best interest of passengers travelling. The operation and provision of services from other tour operators and carriers included in the itinerary is the responsibility of these operators and no responsibility is taken by Potter Travel for the failure of such operators to provide the nominated service. No guarantees will be given as to the exact arrival and departure times for carriers and operators used by Potter Travel. Drop-offs may be in the opposite direction to the pickups, depending on the touring route taken.

Tour Inclusions: Meals and accommodation at the hotels as mentioned in the Itinerary, some lunches and morning or afternoon tea supplied from the coach, entry fees and/or guided tours to attractions as mentioned in the itinerary, tickets to shows (if applicable), luxury coach travel and GST. Meals are stated in the itinerary as INF = In-Flight Meal, B = Breakfast, L = Lunch and D = Dinner.

Not Included: Alcoholic beverages or other drinks (except wine tasting), meals not specified, room service, telephone calls, some morning/afternoon teas or any items of a personal nature.

Special Dietary Requirements: Special meal requests/food allergies must be advised at the time of booking. All efforts are made to accommodate special dietary requirements, like vegetarian and coeliac meals however in some locations this cannot be guaranteed. If You have food allergies, Potter Travel is not responsible for ensuring that the special meals requested meet the needs of Your circumstances. It is the responsibility of You, the passenger, in this circumstance, to make it known at the time the meals are served that.

Travel Insurance: Potter Travel recommends purchasing Travel Insurance to protect against unforeseen circumstances. Potter Travel is accredited to provide you with insurance through CoverMore. Please contact us for a quote.

Health and Fitness: Our tours are designed for active retirees and, whilst we have passengers every day with varied mobility levels, it is an essential requirement that each passenger be able to negotiate coach steps without the aid of the coach driver or other non-related passengers. No passenger will be permitted to continue the tour while their mental or physical condition is such as to render them incapable of caring for themselves. As part of our ongoing commitment to delivering safe and enjoyable travel experiences, we encourage passengers to ensure they are fit to undertake the activities and travel outlined in our tour itineraries.

It is important that all passengers are reasonably healthy and able to participate fully in our tours. Our tours are designed so that you, the passenger, in most cases, can be as active or inactive as you prefer. However, some tours do require a higher level of fitness and the ability to walk on uneven ground unassisted; the ability to walk upstairs or up hills may also be required to participate in the tour fully. There may be times when you will be standing for up to 30 minutes during a tour of an attraction. You may have to walk over uneven ground with no paving. You should be able to get in and out of transportation, including but not limited to Potter Travel coaches, unassisted and be able to manage your own luggage where necessary, i.e. at airports.

Passengers must advise Potter Travel of pre-existing medical conditions at the time of booking that may affect their ability/mobility/health, or well-being whilst on tour. Passengers must provide Us with emergency contact information for a third party before embarking on a tour.

Accommodation: The accommodation listed in the package should be viewed as a guide only and, where not available, accommodation of a similar standard will be provided. Passengers travelling together on the same package may be accommodated in different hotels, and no compensation will be provided for staying in accommodations that differ from those of other travellers.

All accommodation is on a twin share basis unless stated otherwise. Twin share prices are per person. Single rooms may be available for an additional fee. However, Potter Travel makes no guarantee that sufficient single rooms will be available on any given tour. While all care is taken in selecting hotels of an appropriate standard, the day-to-day operations of each hotel remain beyond the control of Potter Travel. Any injury, illness, or loss of enjoyment resulting from a fault on the part of the hotel will not be the responsibility of Potter Travel. Requests for specific room types or showers are subject to availability, and Potter Travel accepts no responsibility if these requests are not met.

Limitation of Liability: Potter Travel products include and depend on the services provided by our suppliers, such as hoteliers, airlines, coach companies and other third-party operators who are not agents or employees of Potter Travel. Although we take care in selecting these suppliers, we cannot and do not take responsibility for the conduct of our suppliers, their employees, agents or subcontractors. Potter Travel reserves the right to alter or change the itinerary, accommodation or carriers at any time for any reason. We reserve the right to substitute coaches at any time when circumstances may require so, without prior notice.

We shall not be liable to any person taking our tour for, loss (including loss of enjoyment), injury or damage to such persons or their belongings or otherwise in connection with any accommodation, transportation or other services or resulting directly or indirectly for any occurrences

Potter Travel reserves the right to cancel or postpone the tour due to insufficient numbers or as a result of circumstances outside the company's control. Potter Travel accepts no responsibility for damage, loss of personal belongings or liability for delays, accidents, injury, irregularity or damage caused by other transport companies used for connecting tours operated by this company.

For more information on our travel terms and conditions, please visit www.pottertravel.com.au/terms-conditions, or speak to one of our friendly team members by calling **02 6297 8585**.

BOOK YOUR NEXT ADVENTURE TODAY

02 6297 8585

WWW.POTTERTRAVEL.COM.AU